



প্রত্যেক নারীর নিজস্ব জগৎ



আমার স্বপ্নের ডুবন



Made with love. Made with care. For every woman out there!

As a woman I play so many different roles every single day. What I need is a home that can complement my versatile life, aid me in my multitasked days and help me unwind at day's end and be my magnificent self!

In Ananya, I found just that!

Come, have a peek at my picture perfect life at Ananya!

G+4  
Structure

122+  
Apartments

6+  
Blocks



আমার স্বপ্নের চাবিকাঠি



Savour the rare luxury of a personal space. Get a view of unrestrained skies. And find your own private isle within the bustling city.



আমার সুস্থতার ভরসা



I get my daily share of adrenaline rush in the Gymnasium.  
I sweat out daily stress & give my muscles the much  
needed relaxation. At Ananya, the perks of strong, good  
health never leaves my side!

Gymnasium

আমার শিশুর শৈশব

Riya Manbhari  
**ananya**

I love watching my children live their childhood outside of our living rooms. I see them run around with their friends in dedicated children play areas. I share with them the joys of open skies, blossoming flowers in landscaped gardens and early morning walks on green lawns with them. At Ananya, my child's life is just the way it deserves to be!

Landscaped Gardens  
Outdoor Children's Play area  
Toddler Zone





আমার দায়িত্বের আরো কাছাকাছি

Riya Manbhari  
**ananya**

As a working woman, I am always pressed for time. But luckily, I live within minutes of ATMs, hospitals, banks as well as nearby shopping arcades and markets. I can reach my workplace on time with excellent transport connectivity from here to every part of the city. And I can be home in time to help my child with her homework! At Ananya, my professional as well as personal needs are all well within my reach!

**Banks & ATMs, Markets,  
 Shopping Arcade, School, Hospital  
 Metro Station, Railway Station**





আমার আনন্দের মুহুর্তে



On some days, I unwind after a hard day's work at the club over a game of pool. On other days I just lounge with my favourite friends over heart to heart conversations. At Ananya, my leisure times are as fun as I am!

- Carrom
- Card Zone
- Pool
- Dart
- Chess

আমার প্রত্যেক উৎসবের মুহুর্তে



There's nothing like giving my family celebrations that spell of style and impressing my guests with the decorative community hall and exquisite banquet rooms! At Ananya, I am the perfect hostess, every single time!

Community Hall







আমার নিজস্ব মুহুর্তে

Riya Manbhari  
**ananya**

On weekends, I regale my senses in the cool, watery depths of the swimming pool with joyful laps and laughter filled splashes. And then, I lounge at poolside, letting the cool breeze relax my mind & soul. At Ananya, constant rejuvenation is my way of life!

Swimming Pool



আমার পরিবারের  
মুখ ও শান্তির ভুবন!

Riya Manbhari  
**ananya**

As the lady of the house, I enjoy the assurance of a life without glitches for my family, with 24 hour power and water facilities. I relish the comfort of a safe home with round the clock security and surveillance and facilities like elevators, dedicated parking. At Ananya, an easy, comfortable life for me and my family is my pride!

24 Hour CCTV Surveillance  
& Security Guards  
24 Hour Power Back Up  
Dedicated Parking Spots





ananya

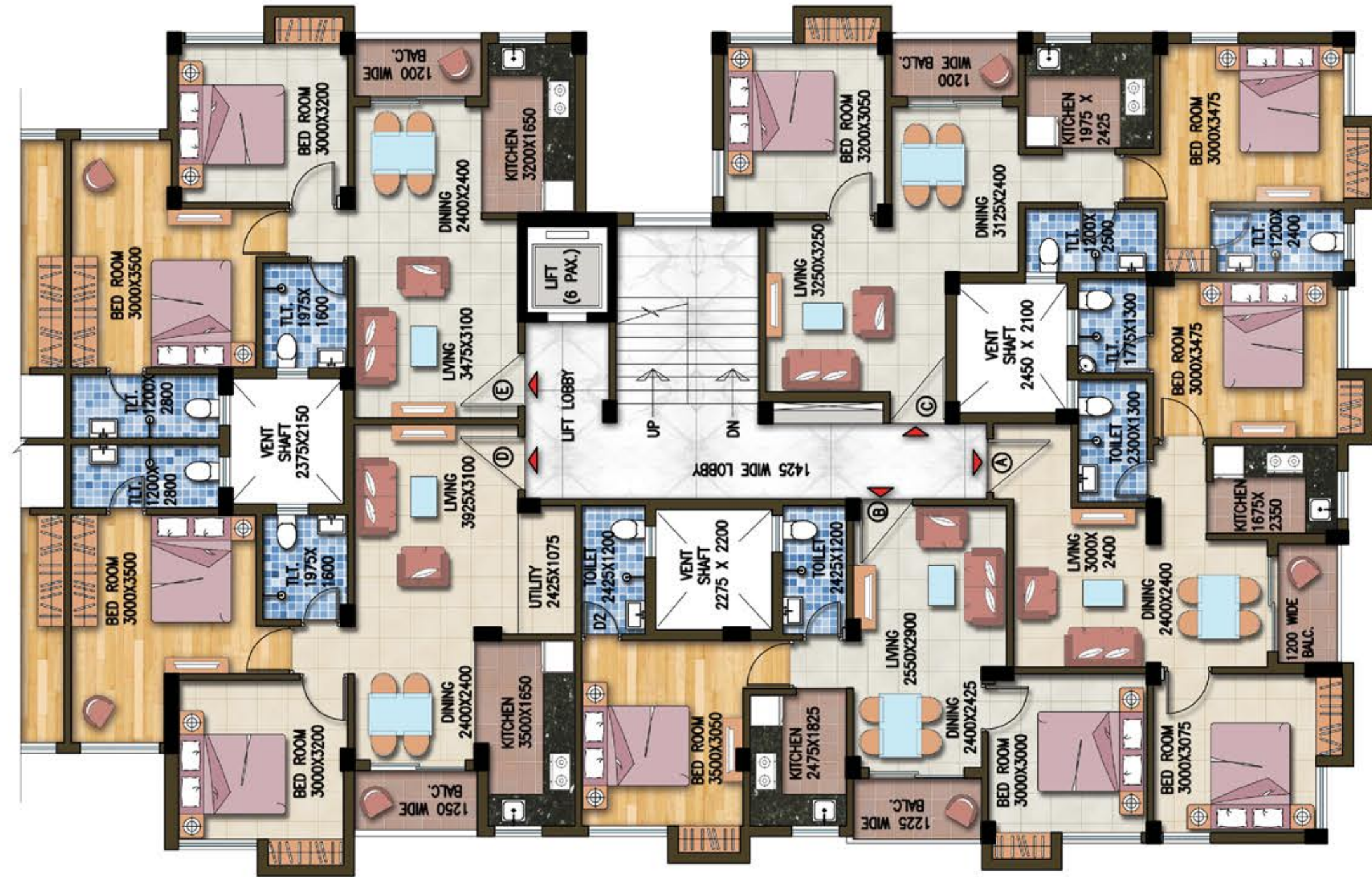
RIYA manbhari





FLOOR PLAN

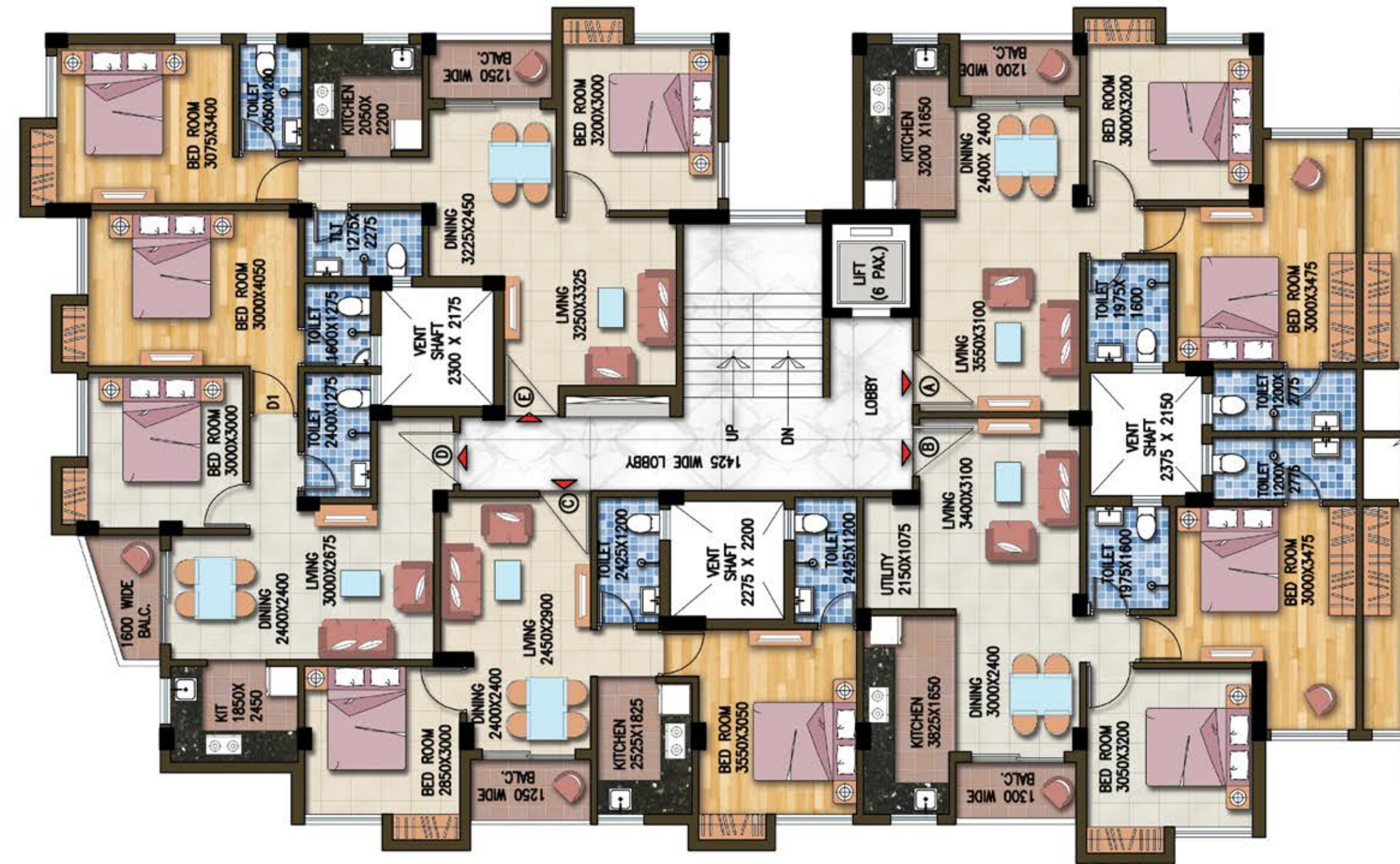
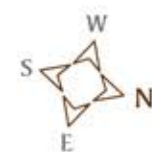




**prtilata**

Typical 1st to 4th Floor Plan

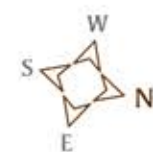
FLAT NO.	BHK TYPE	SBUA(sq.ft.)	FLAT NO.	BHK TYPE	SBUA(sq.ft.)
A	2 BHK	818	D	2 BHK	971
B	2 BHK	808	E	2 BHK	913
C	2 BHK	939			

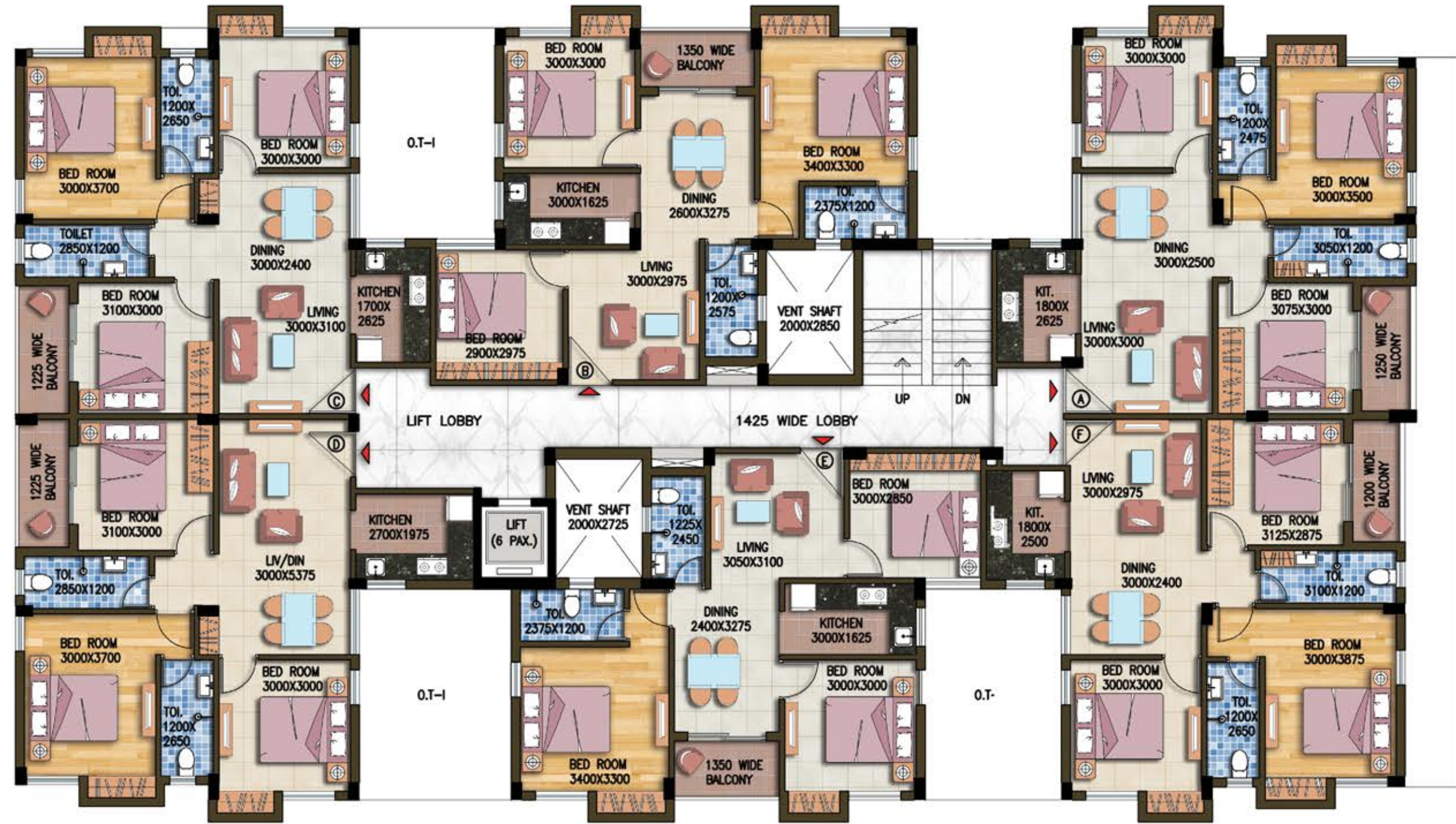


**nivedita**

Typical 1st to 4th Floor Plan

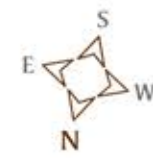
FLAT NO.	BHK TYPE	SBUA(sq.ft.)	FLAT NO.	BHK TYPE	SBUA(sq.ft.)
A	2 BHK	910	D	2 BHK	872
B	2 BHK	975	E	2 BHK	925
C	2 BHK	807			





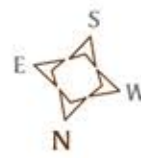
1st Floor Plan

FLAT NO.	BHK TYPE	SBUA(sq.ft.)	FLAT NO.	BHK TYPE	SBUA(sq.ft.)
A	3 BHK	1053	D	3 BHK	1068
B	3 BHK	1050	E	3 BHK	1029
C	3 BHK	1054	F	3 BHK	1053



Typical 2nd to 4th Floor Plan

FLAT NO.	BHK TYPE	SBUA(sq.ft.)	FLAT NO.	BHK TYPE	SBUA(sq.ft.)
A	3 BHK	1166	D	3 BHK	1068
B	3 BHK	1050	E	3 BHK	1029
C	3 BHK	1054	F	3 BHK	1199





FLOOR PLAN



charulata

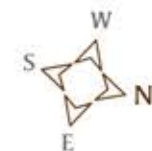
Typical 1st to 4th Floor Plan

FLAT NO.	BHK TYPE	SBUA(sq.ft.)
A	3 BHK	1096
B	2 BHK+S	1072
C	2 BHK	853
D	2 BHK	800



matangini  
1st Floor Plan

FLAT NO.	BHK TYPE	SBUA(sq.ft.)	FLAT NO.	BHK TYPE	SBUA(sq.ft.)
C	1 BHK	408	F	1 BHK	524
D	2 BHK	895	G	2 BHK	818
E	1 BHK	421	H	2 BHK	882

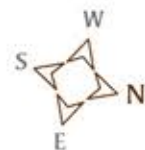




**matangini**

Typical 2nd to 4th Floor Plan

FLAT NO.	BHK TYPE	SBUA(sq.ft.)	FLAT NO.	BHK TYPE	SBUA(sq.ft.)
A	3 BHK+U	1217	E	1 BHK	478
B	2 BHK+S	1121	F	1 BHK	524
C	1 BHK	464	G	2 BHK	895
D	2 BHK	895	H	2 BHK	882



Riya Manbhari  
**ananya**  
FLOOR PLAN





## Specifications

### Structure

Earthquake resistant RCC frame structure with infill brick wall

### Flooring

Vitrified tiles in bedroom, living & dining

### Staircase & Floor Lobby

Stone / tiles / marble

### Doors

Tough timber frames & solid core flush shutter

### Window

Aluminum sliding window with fully glazed shutter

### Kitchen

Ceramic tile floor with black stone / granite counter & sink

Dado of ceramic tiles upto 2 ft above the counter

### Toilet

Ceramic tile floor

Dado of ceramic tile on the wall upto door height

White sanitary ware of a reputed make

C.P. fittings of a reputed make

### Wall Finish

Interior : Plaster of paris / putty

Exterior : High quality weather proof cement paint

### Water Supply

24 hrs. water supply

### Power Back Up

24 X 7 generator back up for common areas and in flat

24 X 7 generator back up to flats at extra cost

### Electrical Points

Modular switches with reputed make

DB with MCB's of reputed make

Necessary electrical point with switches in all bedroom, living / dining, kitchen and toilets

Concealed electrical wiring with PVC insulated copper wire of a reputed make

AC point in master bed room

Conduiting for AC in other bed rooms and living dining

### Telephone / Cable TV

Telephone conduiting in living / dining

Cable TV conduiting in living / dining

### Lift

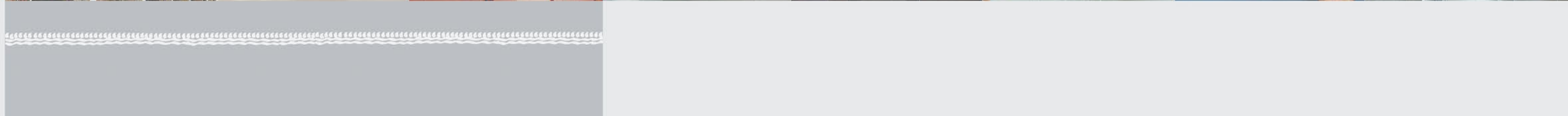
Reputed make

### Fire Fighting

Basic fire fitting system

### Security

24 hrs. security network





Riya Manbhari  
**ananya**



## DEVELOPERS PROFILE

The Group is conglomerate of two prominent business houses, namely 'Riya' & 'Manbhari' who have excelled in their respective fields and who have come together to develop real estate spaces which have unique architectural designs, bringing to its customers all that modern technologies can provide. We work on both residential and commercial projects. Our prime focus is to deliver a high value service to meet customer's expectations & beyond. A dedicated team of professionals work tirelessly to create extraordinary developments which aspire for customer delight. As a modern resurgent India is witnessing an exponential increase in consumer expectations; the group looks at dynamically addressing the renewed consumer mindset.

The Group has several projects in the ambit spread geographically all across Kolkata, Howrah and suburbs. It has a vision to create residential real estate which hosts families who find harmony in their lives and it aspires to create commercial spaces which will offer an exciting environment for growth.



Residential Project - RIYA MANBHARI GREENS, PHASE 1  
Domjur, Near Delhi Public School, Howrah,



Residential Project - RIYA MANBHARI GREENS, PHASE 2  
Domjur, Near Delhi Public School, Howrah,



Residential Project - RIYA MANBHARI SWARNA BHOOMI  
Amta Road, Near Divine Mercy School, Howrah



Residential Project - RIYA GITANJALI  
Barrackpore Barasat Road, Modibari Bus Stop



Residential Project - RIYA OXFORD  
Barasat University (Barasat Barrackpore Road),  
Ichapur Nilgunge Gram Panchyat, Mouza : Berunanpukhuri



Residential Project - PALM ISLAND  
Taki Road, Kadamgachi, Barasat, North 24 Parganas

### Site Address

310 NSC Bose Road, Near Rajpur,  
Atlas More (Panchabati)  
Opp. Netaji Park 1, P.O. - Malancha  
Kolkata - 700 145

### Contact Details

Riya Manbhari  
"Narayani Building", 1st Floor  
27, Brabourne Road  
Kolkata - 700 001

**W : [www.riyamanbhari.com](http://www.riyamanbhari.com)**

**E : [sales@riyamanbhari.com](mailto:sales@riyamanbhari.com)**

Developer



Contact

987 444 0002

987 444 3129

*This is not a legal document. It describes the conceptual plan and intent of the builder. The images and details mentioned in this document are tentative and subject to change at the sole discretion of the developer and/or architects. Internal door layout, car parking spaces and other specifications may change without notice.*